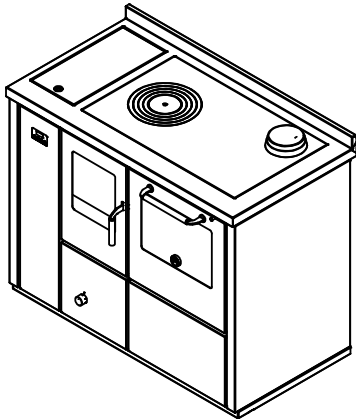


EKB110**THERMO-COOKERS "ECO"**

mm 1100x600xh860

CE EN -12815 certification



Colours:

White, Blue, Green, Grey, Black, Red, Ivory, Rust, Stainless steel

STANDARD EQUIPMENT

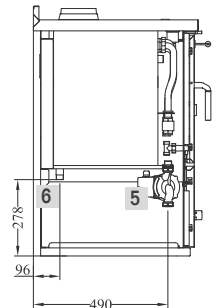
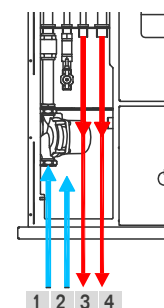
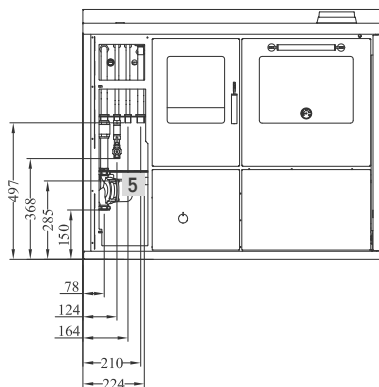
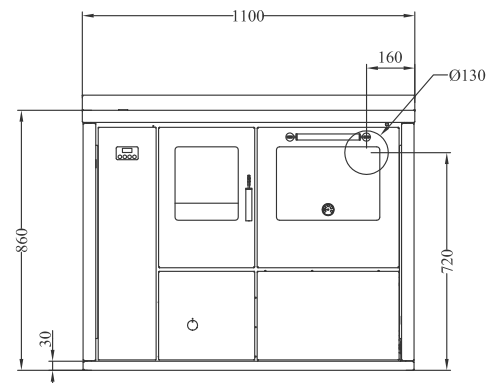
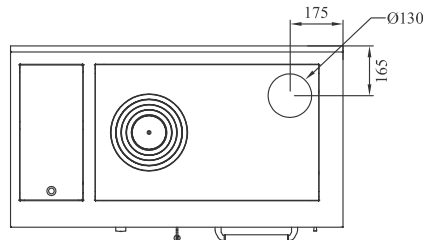
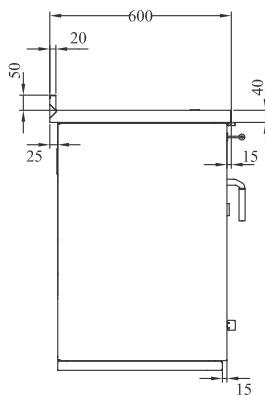
- integrated open expansion chamber, for close circuits implants
- circulation pump and electronic control unit
- right top flue outlet \varnothing 130 mm
- cast-iron hotplate mm 740x450 with cooking rings set
- height-adjustable grill
- black doors and s.steel handles D3
- oven mm. 360x440xh260 with light and thermometer
- stainless steel frame of mm 40 (total h860 mm) A2-B4
- stainless steel base h. 30 mm

ON DEMAND

- s.steel doors
- production of domestic hot water 12.5 Lt/min
- rear flue, only on the right side \varnothing 130 mm
- glass-ceramic hotplate (rear flue only)

OPTIONALS

- front handrail s.steel or brass, 2 or 3 sides, heavy-duty radiant hotplate, s.steel hotplate cover



- 1 OUT connection \varnothing 3/4" female
- 2 Network \varnothing 1/2" male
- 3 Domestic hot water \varnothing 1/2" male
- 4 IN connection \varnothing 3/4" male
- 5 Loading/Discharge
- 6 Drain overflow \varnothing 1/2" male

DATA SHEET

Energy Efficiency Class: A+	Efficiency: 85 %
Nominal heat output (max): 17.3 (25) kW	Nominal water heat output (max): 8.8 (15) kW
Mean content of CO to 13% O ₂ : 0.09 %	Average DUST content to 13% O ₂ : 21.3 mg/Nm ³
Maximum operating pressure: 1.5 bar	Boiler capacity: 48Lt
Hearth dimensions (LxPxH): 22x41x45 cm	Fill opening (LxH): 22x25 cm
Mean flue gas temperature: 235 °C	Flue gas mass flow: 12.5 g/s
Flue depression: mbar 0.12	Net weight/packaging included: kg 230/250